



**Nakiso Borehole Drilling Offices:**  
65 Churchill Avenue, Alexandra Park  
Harare, Zimbabwe

Landline +263 867 71 88844  
+263 78 876 6706  
+263 78 860 8009

**Email:** info@nakisoboreholes.co.zw  
**Website:** www.nakisoboreholes.co.zw

*Profile Site Survey Report for Borehole Drilling*

<b>CLIENT NAME</b>	<b>ZETDC CHEGUTU</b>
<b>CELL NUMBER</b>	<b>N/A</b>
<b>SITTING DATE</b>	<b>11 NOVEMBER 2022</b>
<b>ADDRESS</b>	<b>CHEGUTU URBAN</b>
<b>INSTRUMENT</b>	<b>PQWT</b>

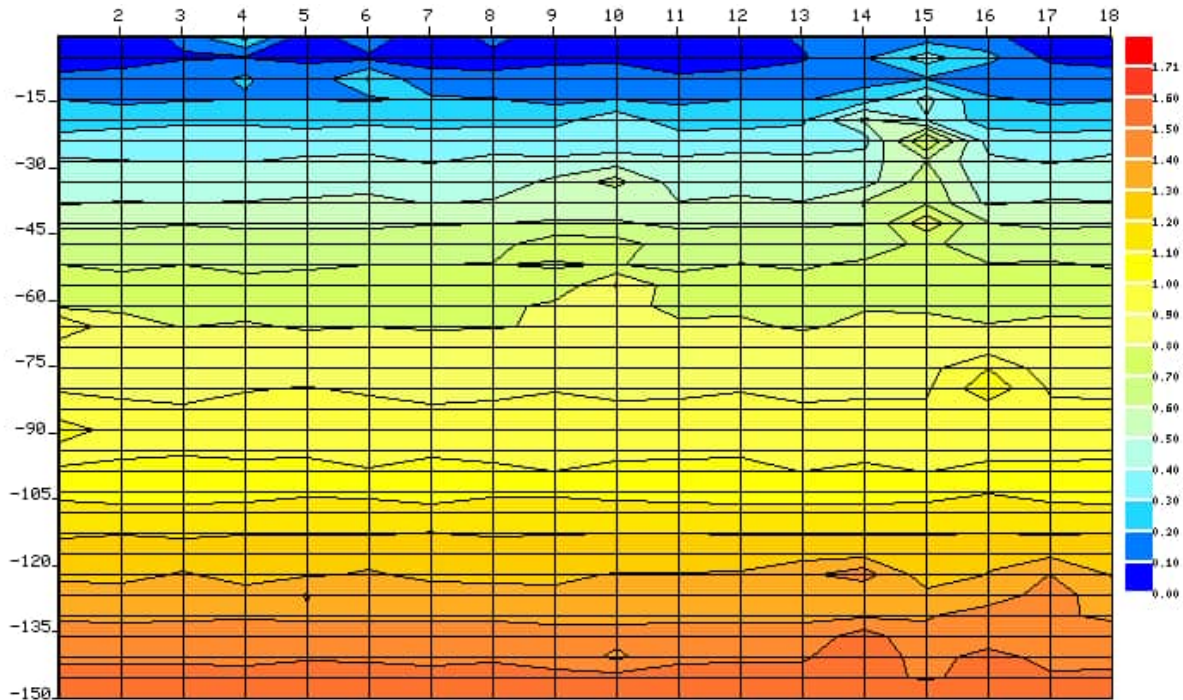
**WATER SURVEY DETAILS :**

- 1.MN Electrode Equidistance: **10 m**
- 2.Point Distance: **1 m**
- 3.Graph Depth: **150 m**

*Disclaimer: There is no 100% Guarantee of availability of water on proposed point.*

## Profile Map/Graph of ZETDC CHEGUTU (Chegutu Urban)

Coordinates : 18°07'15.8"S and 30°09'21.6"E



### KEY

**Red Colour** represents **highly** strengthen: high resistivity of rock formation, and the colour indicate danger symbol, we don't get water in this zones, getting in limited areas.

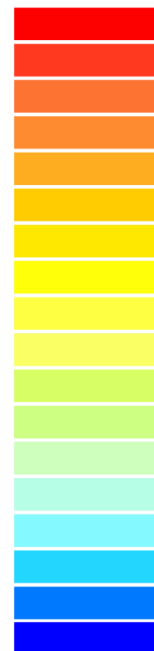
**Orange Colour** represents **less than the highly** strengthen rock formation, this colour also indicates some of danger zone, here we don't get water in this zones, getting in the limited areas.

**Yellow Colour** represents **medium** strengthen rock formation. this colour also indicates warning to getting water in this zones.

**Green Colour** represents the **less than medium** strengthen rock formation. this colour also indicates starting of water zones.

**Light Blue Colour** represents the **soft rock formation** water bearing rock formation, this colour indicates wealthy chances of getting water in the zone.

**Blue Color** represents the **soft rock formation**, water bearing rock formation, this color indicates wealthy chances of getting water in the zone.



## RECOMMENDATIONS

### Graph/ Map Analysis

- 1.The proposed site is at **Point 10/11** with a likelihood of giving a low to an average yielding borehole and our suitable point (**Point 10/11**) requires **class 10**. There could also be a need for double casing to minimize risk of borehole collapse. However, exact casing to be used will be determined during drilling of the borehole.
- 2.The minimum depth is **75m** and this is due to the soil formation which might require **Class 10** to be ascertained during drilling. There is water potential from 30m.
3. Please be advised that the actual yield quality to determine the suitability of the groundwater will be known after carrying out a capacity test and is recommended to conduct after the borehole is drilled.
4. Chances of success are **65%**

### Summary

According to this profile, **Point 10/11** may be suitable to drill a borehole. Casings used can only be determined by drillers during the actual drilling of the borehole however class 6 casings can be used but we strongly recommend class 10 as it is a pressure class..

**Minimum Depth:** 75 meters and above

**Maximum Depth:** 150 meters

During drilling, the yield of water will be estimated by the drillers by means of a blow test, which is not accurate. A more accurate water yield may be obtained by having a capacity test done.

Capacity test involves pumping water out of the borehole for at least 1 hour to determine the quality of water yield and also the groundwater potential was estimated based on pumping tests, and the optimal motorized pump capacity and pump installation depth as recommended considering water demand.If the borehole happens to run dry during this test, the recovery is used to determine the borehole yield.